

Ohio County Profiles

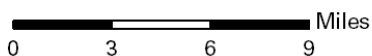
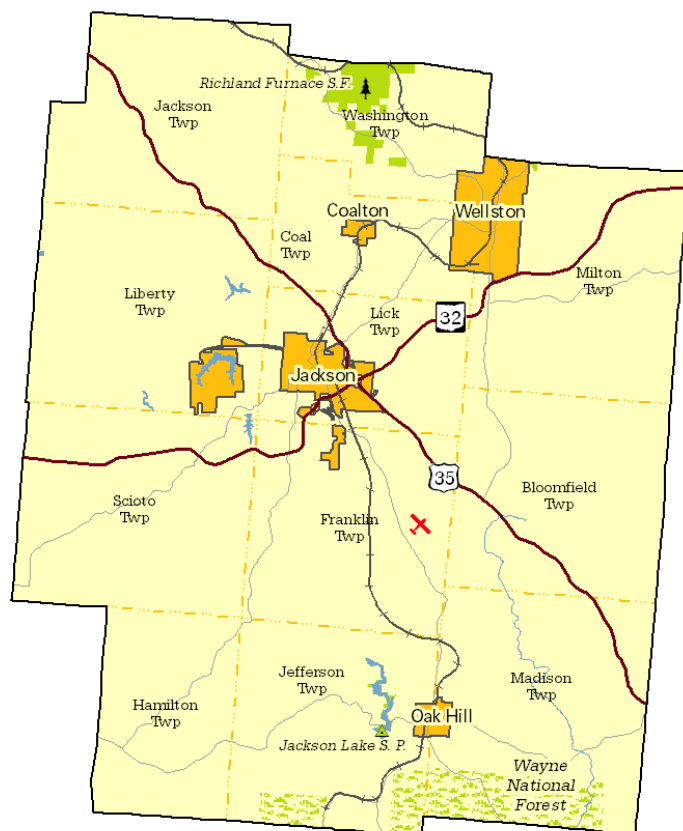


Department of
Development

Prepared by the Office of Policy, Research and Strategic Planning

Jackson County

Established: Act - March 1, 1816
2009 Population: 33,440
Land Area: 420.3 square miles
County Seat: Jackson City
Named for: Andrew Jackson, Seventh U.S. President



Taxes

Taxable value of real property	\$424,508,580
Residential	\$271,697,830
Agriculture	\$63,994,250
Industrial	\$19,678,260
Commercial	\$68,753,250
Mineral	\$384,990
Ohio income tax liability	\$13,709,851
Average per return	\$1,013.74

Land Use/Land Cover

	Percent
Urban (Residential/Commercial/Industrial/Transportation and Urban Grasses)	1.11%
Cropland	11.51%
Pasture	17.18%
Forest	68.98%
Open Water	0.43%
Wetlands (Wooded/Herbaceous)	0.00%
Bare/Mines	0.79%

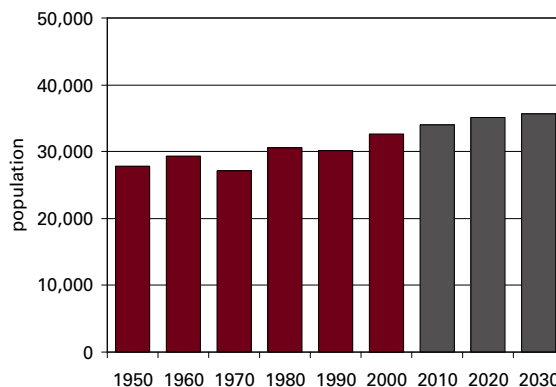
Largest Areas

	Census 2000	Est. 2009
Jackson city	6,220	6,164
Wellston city	6,074	5,949
Lick twp	2,630	2,690
Jefferson twp UB	2,569	2,671
Franklin twp	1,918	2,014
Scioto twp	1,788	1,907
Liberty twp	1,680	1,792
Oak Hill village	1,680	1,613
Coal twp UB	1,533	1,592
Madison twp UB	1,426	1,527

UB: Unincorporated Balance

Total Population

Census	Estimated
1800	2001
1810	2002
1820	2003
1830	2004
1840	2005
1850	2006
1860	2007
1870	2008
1880	2009
1890	Projected
1900	2010
1910	2020
1920	2030
1930	
1940	
1950	
1960	
1970	
1980	
1990	
2000	



Population by Race	Number	Percent
Total Population	32,641	100.0%
White	31,765	97.3%
African-American	318	1.0%
Native American	82	0.3%
Asian	73	0.2%
Pacific Islander	29	0.1%
Other	30	0.1%
Two or More Races	344	1.1%
Hispanic (may be of any race)	388	1.2%
Total Minority	1,169	3.6%

Educational Attainment	Number	Percent
Persons 25 years and over	21,306	100.0%
No high school diploma	5,648	26.5%
High school graduate	9,186	43.1%
Some college, no degree	3,118	14.6%
Associate degree	1,015	4.8%
Bachelor's degree	1,505	7.1%
Master's degree or higher	834	3.9%

Family Type by Employment Status	Number	Percent
Total Families	9,251	100.0%
Married couple, husband and wife in labor force	3,211	34.7%
Married couple, husband in labor force, wife not	1,737	18.8%
Married couple, wife in labor force, husband not	546	5.9%
Married couple, husband and wife not in labor force	1,572	17.0%
Male householder, in labor force	385	4.2%
Male householder, not in labor force	211	2.3%
Female householder, in labor force	859	9.3%
Female householder, not in labor force	730	7.9%

Household Income in 1999	Number	Percent
Total Households	12,651	100.0%
Less than \$10,000	2,073	16.4%
\$10,000 to \$19,999	2,060	16.3%
\$20,000 to \$29,999	2,046	16.2%
\$30,000 to \$39,999	1,852	14.6%
\$40,000 to \$49,999	1,409	11.1%
\$50,000 to \$59,999	1,179	9.3%
\$60,000 to \$74,999	821	6.5%
\$75,000 to \$99,999	875	6.9%
\$100,000 to \$149,999	245	1.9%
\$150,000 to \$199,999	26	0.2%
\$200,000 or more	65	0.5%
Median household income	\$30,661	

Population by Age	Number	Percent
Total Population	32,641	100.0%
Under 6 years	2,543	7.8%
6 to 17 years	5,930	18.2%
18 to 24 years	2,862	8.8%
25 to 44 years	9,371	28.7%
45 to 64 years	7,481	22.9%
65 years and more	4,454	13.6%
Median Age	36.3	

Family Type by Presence of Own Children Under 18	Number	Percent
Total Families	9,251	100.0%
Married-couple families with own children	3,143	34.0%
Male householder, no wife present, with own children	336	3.6%
Female householder, no husband present, with own children	867	9.4%
Families with no own children	4,905	53.0%

Poverty Status in 1999 of Families By Family Type by Presence Of Related Children	Number	Percent
Total Families	9,251	100.0%
Family income above poverty level	7,991	86.4%
Family income below poverty level	1,260	13.6%
Married couple, with related children	293	23.3%
Male householder, no wife present, with related children	100	7.9%
Female householder, no husband present, with related children	491	39.0%
Families with no related children	376	29.8%

Ratio of Income in 1999 To Poverty Level	Number	Percent
Population for whom poverty status is determined	32,103	100.0%
Below 50% of poverty level	2,135	6.7%
50% to 99% of poverty level	3,151	9.8%
100% to 149% of poverty level	3,471	10.8%
150% to 199% of poverty level	3,775	11.8%
200% of poverty level or more	19,571	61.0%

Residence in 1995	Number	Percent
Population 5 years and over	30,545	100.0%
Same house in 1995	18,037	59.1%
Different house, same county	8,105	26.5%
Different county, same state	2,739	9.0%
Different state	1,483	4.9%
Puerto Rico or U.S. islands	0	0.0%
Foreign country	181	0.6%

Travel Time To Work

	Number	Percent
Workers 16 years and over	13,026	100.0%
Less than 15 minutes	4,528	34.8%
15 to 29 minutes	3,828	29.4%
30 to 44 minutes	1,914	14.7%
45 to 59 minutes	932	7.2%
60 minutes or more	1,447	11.1%
Worked at home	377	2.9%

Mean travel time 28.3 minutes

Housing Units

	Number	Percent
Total housing units	13,909	100.0%
Occupied housing units	12,619	90.7%
Owner occupied	9,319	67.0%
Renter occupied	3,300	23.7%
Vacant housing units	1,290	9.3%

Year Structure Built

	Number	Percent
Total housing units	13,909	100.0%
Built 1995 to March 2000	1,456	10.5%
Built 1990 to 1994	1,152	8.3%
Built 1980 to 1989	1,823	13.1%
Built 1970 to 1979	2,183	15.7%
Built 1960 to 1969	1,365	9.8%
Built 1950 to 1959	1,547	11.1%
Built 1940 to 1949	1,249	9.0%
Built 1939 or earlier	3,134	22.5%

Median year built 1968

Value for Specified Owner-Occupied Housing Units

	Number	Percent
Specified owner-occupied housing units	5,892	100.0%
Less than \$20,000	176	3.0%
\$20,000 to \$39,999	857	14.5%
\$40,000 to \$59,999	1,358	23.0%
\$60,000 to \$79,999	1,143	19.4%
\$80,000 to \$99,999	860	14.6%
\$100,000 to \$124,999	621	10.5%
\$125,000 to \$149,999	431	7.3%
\$150,000 to \$199,999	238	4.0%
\$200,000 to \$249,999	113	1.9%
\$250,000 to \$499,999	82	1.4%
\$500,000 to \$999,999	13	0.2%
\$1,000,000 or more	0	0.0%

Median value \$70,400

House Heating Fuel

	Number	Percent
Occupied housing units	12,619	100.0%
Utility gas	5,154	40.8%
Bottled, tank or LP gas	1,776	14.1%
Electricity	4,071	32.3%
Fuel oil, kerosene, etc	809	6.4%
Coal, coke or wood	714	5.7%
Solar energy or other fuel	73	0.6%
No fuel used	22	0.2%

Gross Rent

	Number	Percent
Specified renter-occupied housing units	3,096	100.0%
Less than \$100	46	1.5%
\$100 to \$199	385	12.4%
\$200 to \$299	297	9.6%
\$300 to \$399	569	18.4%
\$400 to \$499	630	20.3%
\$500 to \$599	467	15.1%
\$600 to \$699	147	4.7%
\$700 to \$799	57	1.8%
\$800 to \$899	22	0.7%
\$900 to \$999	22	0.7%
\$1,000 to \$1,499	60	1.9%
\$1,500 or more	0	0.0%
No cash rent	394	12.7%

Median gross rent \$408

Median gross rent as a percentage of household income in 1999 26.4

Selected Monthly Owner Costs for Specified Owner-Occupied Housing Units

	Number	Percent
Specified owner-occupied housing units with a mortgage	3,505	100.0%
Less than \$400	155	4.4%
\$400 to \$599	923	26.3%
\$600 to \$799	1,080	30.8%
\$800 to \$999	595	17.0%
\$1,000 to \$1,249	429	12.2%
\$1,250 to \$1,499	185	5.3%
\$1,500 to \$1,999	82	2.3%
\$2,000 to \$2,999	56	1.6%
\$3,000 or more	0	0.0%

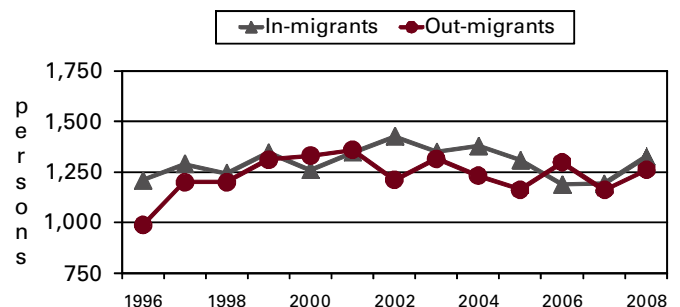
Median monthly owners cost \$722

Median monthly owners cost as a percentage of household income 21.0

Vital Statistics

	Number	Rate
Births / rate per 1,000 women aged 15 to 44	448	65.6
Teen births / rate per 1,000 females 15-19	70	69.1
Deaths / rate per 100,000 population	360	1,080.6
Marriages / rate per 1,000 population	253	7.5
Divorces / rate per 1,000 population	189	5.6

Migration



Agriculture

Land in farms (acres)	75,000
Number of farms	450
Average size (acres)	167
Total cash receipts	\$7,413,000
Per farm	\$16,474

Education

Public schools	12
Students (Average Daily Membership)	5,444
Expenditures per student	\$8,946
Student-teacher ratio	17.8
Graduation rate	91.3
Teachers (Full Time Equivalent)	381.0
Non-public schools	2
Students	160
4-year public universities	0
Branches	0
2-year public colleges	0
Private universities and colleges	0
Public libraries (Main / Branches)	3 / 0

Transportation

Registered motor vehicles	39,739
Passenger cars	22,307
Noncommercial trucks	9,395
Total license revenue	\$1,103,475.70
Interstate highway miles	0.00
Turnpike miles	0.00
U.S. highway miles	27.23
State highway miles	141.11
County, township, and municipal road miles	776.49
Commercial airports	1

Voting

Number of precincts	36
Number of registered voters	22,996
Voted in 2006 election	14,505
Percent turnout	63.1%

Health Care

Physicians (MDs & DOs)	26
Registered hospitals	1
Number of beds	25
Licensed nursing homes	4
Number of beds	294
Licensed residential care	2
Number of beds	130
Adults with employer-based insurance	59.2%
Children with employer-based insurance	50.5%

State Parks, Forests, Nature Preserves, And Wildlife Areas

Facilities	10
Acreage	11,050.10

Communications

Television stations	0
Radio stations	4
Daily newspapers	0
Circulation	0

Crime

Total crimes reported in Uniform Crime Report	81
---	----

Finance

FDIC insured financial institutions (HQs)	2
Assets (000)	\$203,772
Branch offices	16
Institutions represented	5

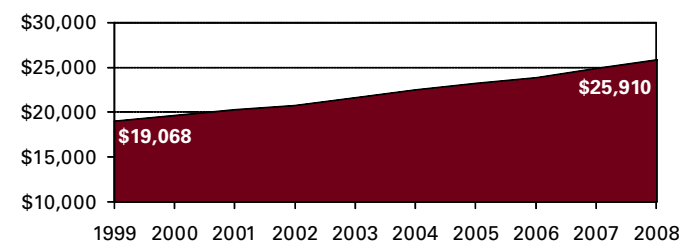
Transfer Payments

Total transfer payments	\$250,991,000
Payments to individuals	\$245,370,000
Retirement and disability	\$81,670,000
Medical payments	\$108,192,000
Income maintenance (Supplemental SSI, family assistance, food stamps, etc)	\$30,947,000
Unemployment benefits	\$6,987,000
Veterans benefits	\$8,060,000
Federal education and training assistance	\$4,977,000
Other payments to individuals	\$4,537,000
Total personal income	\$864,989,000
Dependency ratio	29.0%

Federal Expenditures

Direct expenditures or obligations	\$259,666,359
Retirement and disability	\$100,514,138
Other direct payments	\$59,723,940
Grant awards	\$81,740,179
Highway planning and construction	\$3,866,222
Temporary assistance to needy families	\$2,092,956
Medical assistance program	\$65,407,191
Procurement contract awards	\$1,109,439
Dept. of Defense	\$0
Salary and wages	\$16,578,663
Dept. of Defense	\$11,590,000
Other federal assistance	\$24,433,739
Direct loans	\$514,043
Guaranteed loans	\$9,530,033
Insurance	\$14,389,663

Per Capita Personal Income



Civilian Labor Force

	2005	2006	2007	2008	2009
Civilian labor force	15,800	16,000	15,900	15,300	15,500
Employed	14,700	14,800	14,600	14,000	13,800
Unemployed	1,200	1,200	1,300	1,300	1,700
Unemployment rate	7.3	7.3	7.9	8.4	11.1

Establishments, Employment, and Wages by Sector: 2008

Industrial Sector	Number of Establishments	Average Employment	Total Wages	Average Weekly Wage
Private Sector	596	9,440	\$273,653,636	\$557
Goods-Producing	111	4,066	\$141,942,663	\$671
Natural Resources and Mining	20	267	\$10,554,981	\$760
Constuction	52	376	\$16,552,498	\$848
Manufacturing	39	3,424	\$114,835,184	\$645
Service-Providing	486	5,374	\$131,710,973	\$471
Trade, Transportation and Utilities	173	1,872	\$44,047,400	\$453
Information	9	86	\$2,927,804	\$653
Financial Services	64	396	\$13,287,650	\$646
Professional and Business Services	60	608	\$17,821,661	\$564
Education and Health Services	58	1,234	\$39,386,192	\$614
Leisure and Hospitality	54	933	\$10,218,991	\$211
Other Services	68	244	\$4,014,775	\$316
Federal Government		74	\$3,284,573	\$851
State Government		180	\$9,126,777	\$976
Local Government		1,459	\$47,039,534	\$620

Private Sector total includes Unclassified establishments not shown.

Change Since 2003

Private Sector	-2.0%	-0.9%	14.1%	15.1%
Goods-Producing	-7.5%	-7.8%	3.8%	12.6%
Natural Resources and Mining	-13.0%	-12.7%	7.0%	22.4%
Construction	-10.3%	-3.6%	30.4%	35.5%
Manufacturing	0.0%	-7.9%	0.6%	9.1%
Service-Producing	-0.4%	5.1%	27.7%	21.4%
Trade, Transportation and Utilities	2.4%	-5.2%	8.6%	14.7%
Information	-10.0%	-25.9%	-7.0%	25.3%
Financial Services	1.6%	3.4%	8.5%	5.0%
Professional and Business Services	-11.8%	47.2%	47.9%	0.5%
Education and Health Services	9.4%	17.5%	72.0%	46.2%
Leisure and Hospitality	-12.9%	1.3%	21.2%	19.9%
Other Services	7.9%	-3.9%	4.4%	8.6%
Federal Government		-7.5%	3.7%	12.4%
State Government		18.4%	30.7%	10.5%
Local Government		4.4%	20.7%	15.7%

Business Numbers

	2004	2005	2006	2007	2008
Business starts	71	58	52	43	49
Active businesses	625	616	608	552	532

Major Employers

Bellisio Foods Inc	Mfg
General Mills Inc	Mfg
Holzer Medical Center	Serv
Jackson City Schools	Govt
Masco Corp/Merillat Inds Inc	Mfg
Osco Industries Inc	Mfg
Wal-Mart Stores Inc	Trade
Wellston City Schools	Govt

Residential Construction

	2005	2006	2007	2008	2009
Total units	89	90	84	62	61
Total valuation (000)	\$10,962	\$11,903	\$11,555	\$9,611	\$7,131
Total single-unit bldgs	89	87	84	58	41
Average cost per unit	\$123,171	\$134,517	\$137,555	\$158,923	\$138,143
Total multi-unit bldg units	0	3	0	4	20
Average cost per unit	\$0	\$66,833	\$0	\$98,251	\$73,352